

The Ripple Effect of Research



Alexa Cares, Nurse-Family Partnership (NFP), Kerry Caverly, Parents as Teacher (PAT), Jill Filene, James Bell Associates, Kathryn Harding, Healthy Families America (HFA), Allison Kemner, PAT, Molly O'Fallon, NFP, Patricia Marickovich, Early Head Start, Brianna Stormer, HFA

Presenters

Molly O'Fallon

Nurse-Family Partnership

Jill Filene

MIHOPE and MIHOPE-Strong Strong

Panelists

Allison Kemner

Parents as Teachers

Kathryn Harding

Healthy Families America

Patty Marickovich

Early Head Start

National Home Visiting Model Alliance



National Home Visiting Alliance Mission

The collective mission of the Alliance is to improve the health and wellbeing of pregnant women, young children and their parents by elevating and advancing the field of evidenced-based home visiting through collaborative leadership. Our activities include legislative and local advocacy, identifying cross-model issues that affect outcomes of interest for each model, collaborations on research, and innovations to improve service. While each home visiting model is unique in intervention goals and outcomes, aspects of federal, state, and local mechanisms of HV implementation pertain to all.

Early Head Start

Early Head Start MIHOPE Consortium



Purpose of MIHOPE Consortium

To bring together all Early Head Start programs participating in the study and facilitate collaborative relationships of support.

Goal of MIHOPE Consortium

To understand how the study can potentially inform and influence service delivery for the EHS Home Based Option and the field.

Mother and Infant Home Visiting Program Evaluation (MIHOPE) & MIHOPE-Strong Start



Sponsors and Study Team

Sponsored by:

- U.S. Department of Health and Human Services
- Administration for Children and Families, Office of Planning, Research and Evaluation (OPRE)
- Health Resources and Services Administration (HRSA), Maternal and Child Health Bureau
- The Centers for Medicare and Medicaid Services (CMS), Center for Medicare and Medicaid Innovation

Project Directors:

Virginia Knox and Charles Michalopoulos

Project Team:

- MDRC
- James Bell Associates
- Johns Hopkins University
- Mathematica Policy Research



MIHOPE

Evaluation of the effectiveness of home visiting models supported by

MIECHV

NFP, HFA, PAT, EHS

4 components:

1. State needs assessment analysis
2. Random assignment impact study
3. Multi-level implementation study
4. Economic evaluation

MIHOPE-Strong Start

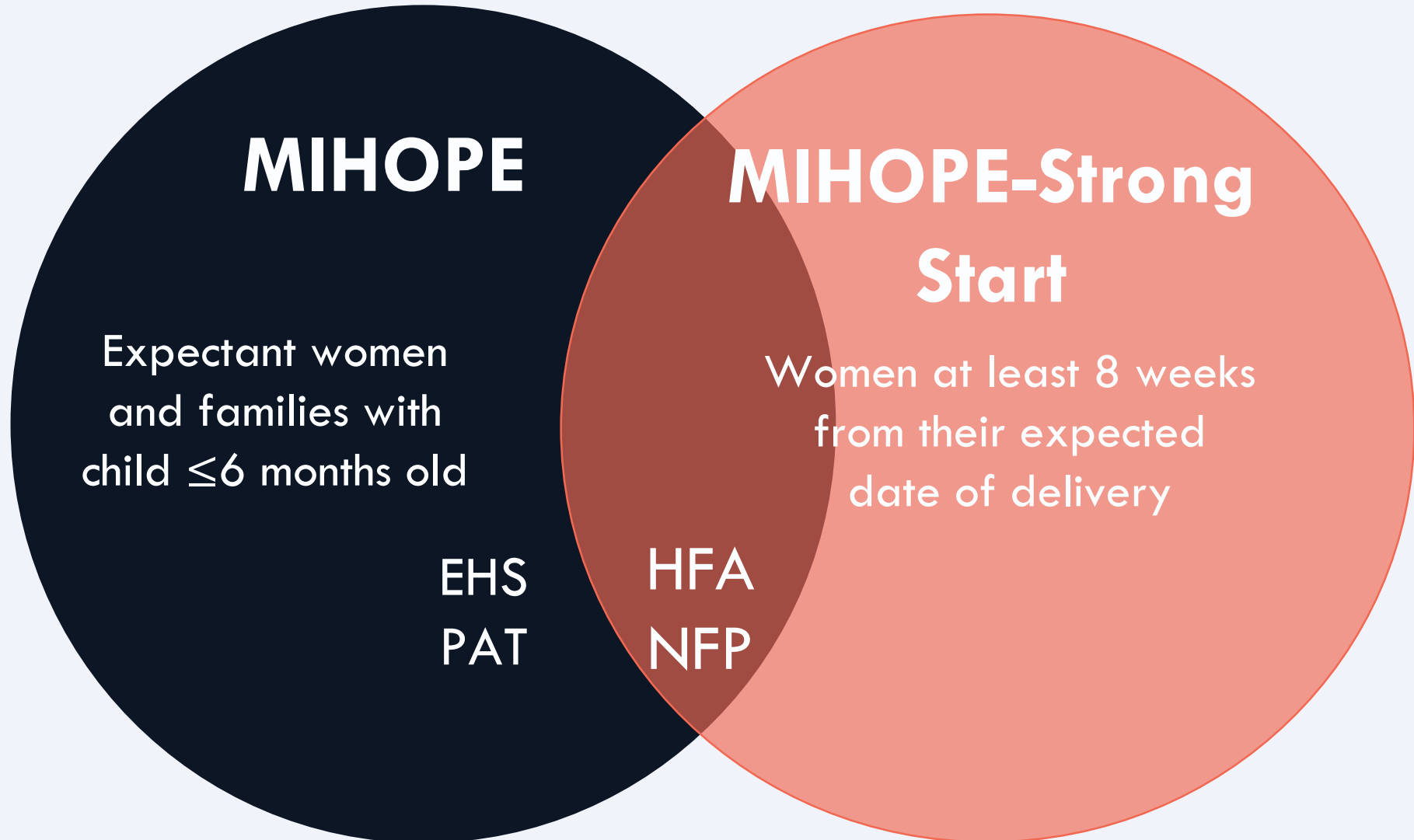
Evaluation of the effectiveness of home visiting models with prior evidence of improving birth outcomes

NFP and HFA

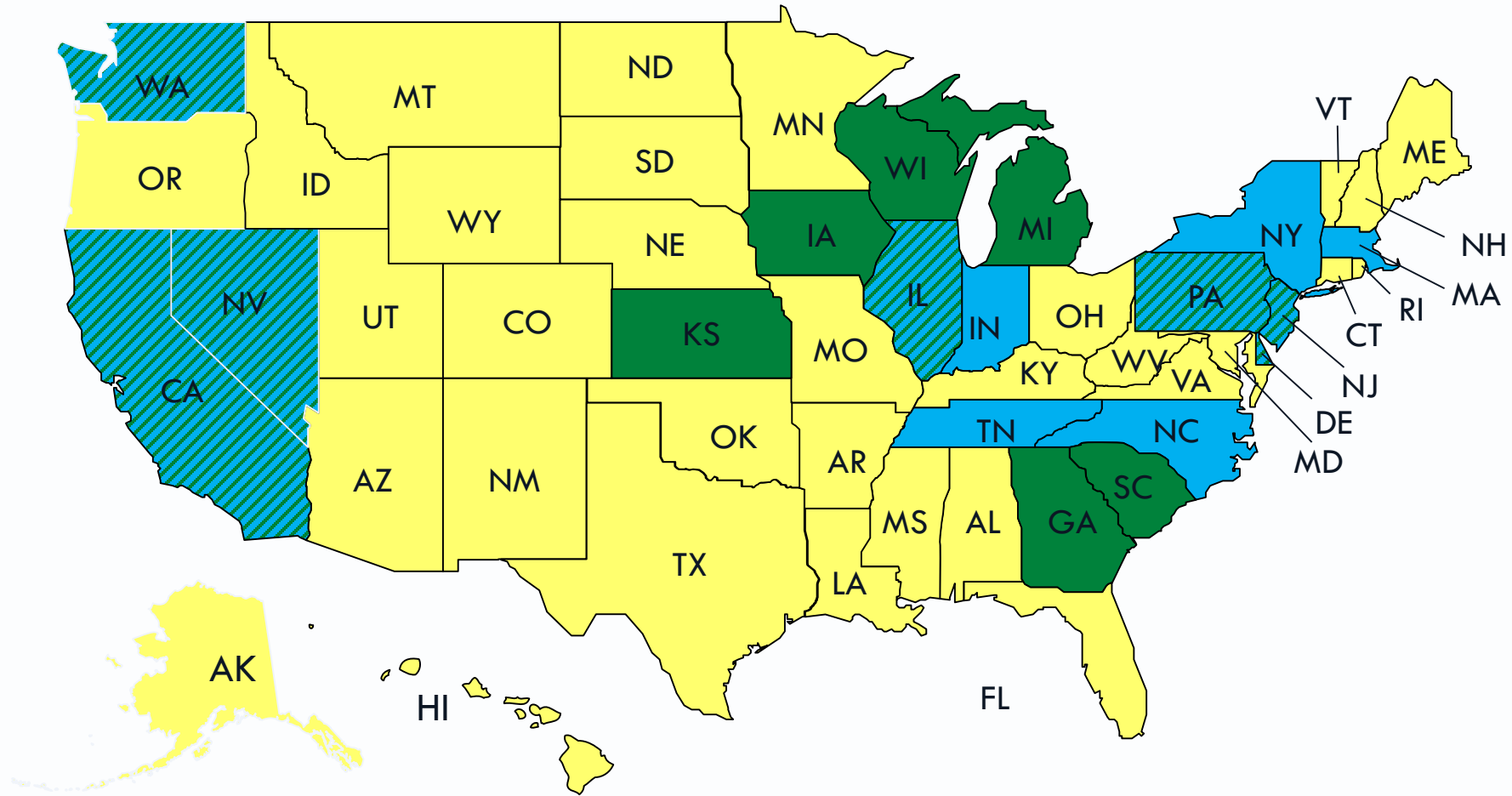
2 components:

1. Random assignment impact study
2. Multi-level implementation study

Sample



States with Participating Programs



MIHOPE programs

MIHOPE-Strong Start programs

MIHOPE & MIHOPE-Strong Start programs

Process for this evaluation process:

- First, this project is not research. Included cross-model focused interviews.
- Use of consistent focused questions about research and about research specific to participation in MIHOPE and MSS.
- A request was sent to supervisors in each model.
- Each supervisor was interviewed by model staff person using the focused questions.
- Collaboratively, we analyzed the results to identify themes.
- Secondly, we sent questions to all of our networks about research in the field.

** EHS was not able to participate in the focused questions and short survey due to federal regulations.

Total Number of Participants Interviewed

Model	Agencies in MIHOPE	MIHOPE Agencies Participated in Interview	Agencies in MIHOPE-SS	MIHOPE-SS Participated in Interview	Agencies in MIHOPE and MIHOPE-SS	Agencies in MIHOPE and MIHOPE-SS Participated in Interview
HFA	26	22	12	9	1	1
NFP	21	13	9	6	1	1
PAT	22	11	0	0	0	0
EHS	19	0	0	0	0	0

Common Themes

A pregnant woman in a red dress is shown from the side, holding her belly. The image is overlaid with a semi-transparent dark blue filter. The text is positioned on the left side of the image.

Randomization

Data Collection

Retention

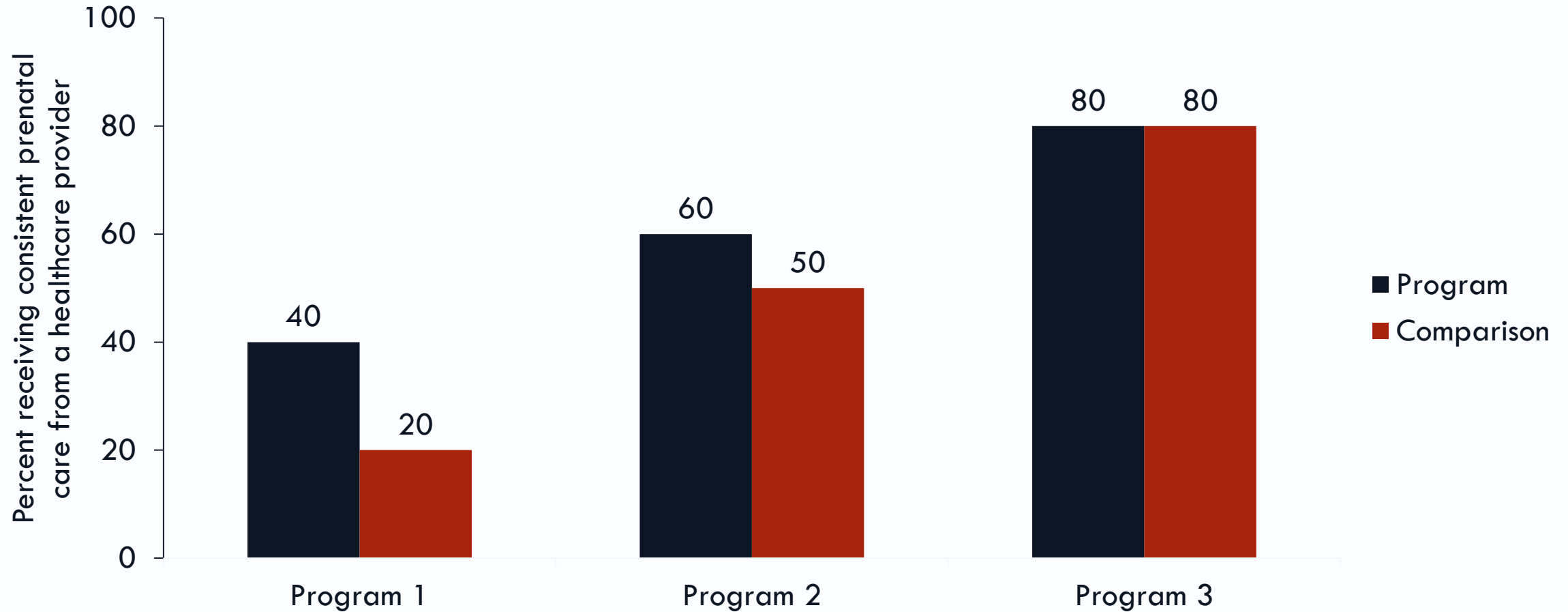
What is Random Assignment?

- Fair way to determine who receives program services
- A lottery-like process to place individuals into a program group and a comparison group
- Allows you to measure the impacts (effects) on outcomes for each group

Groups will have similar average characteristics before one receives program services

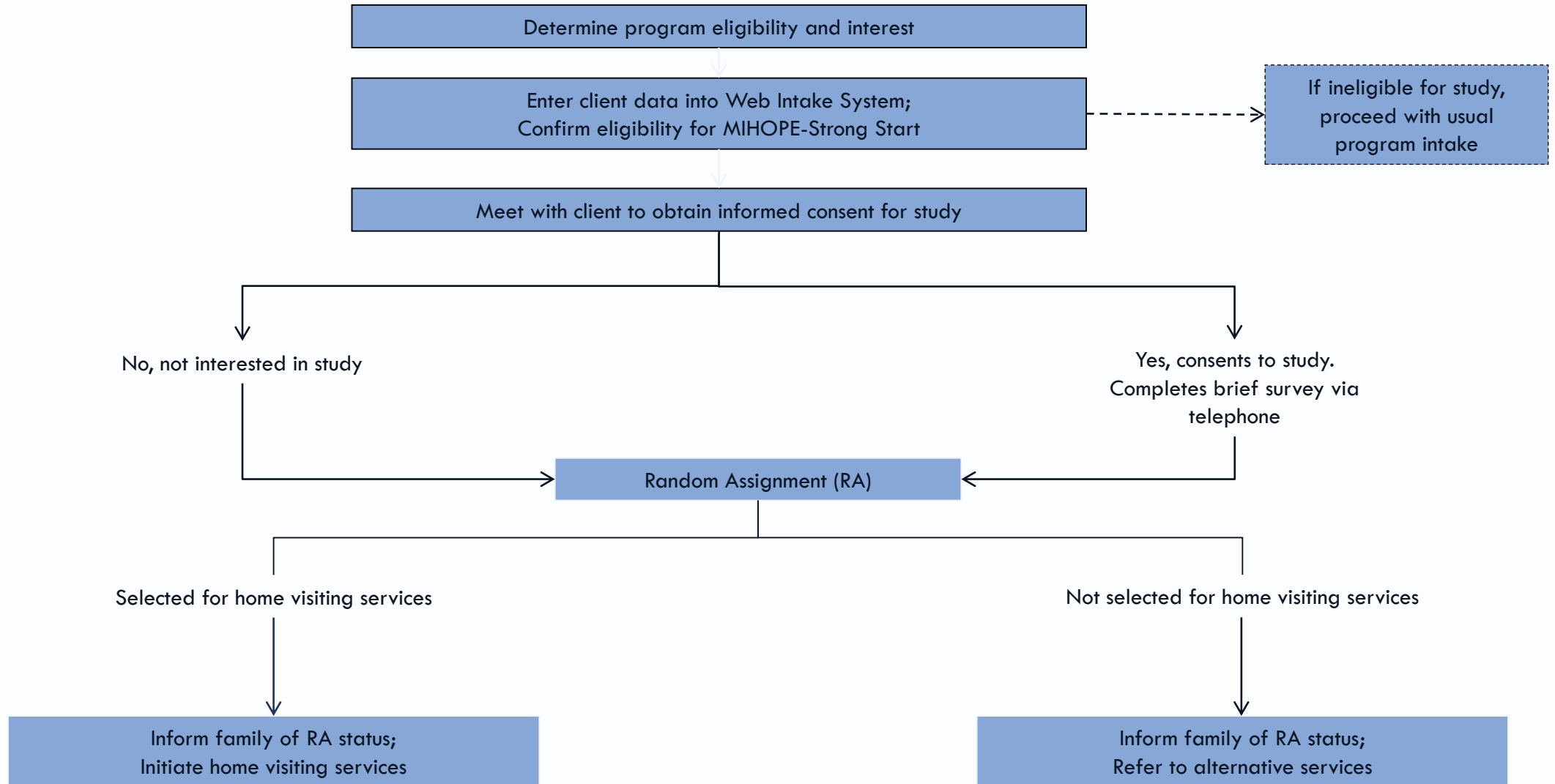
- The differences in outcomes over time between groups are due to program services

Why Random Assignment?



Without a comparison, Program 3 might appear to be the most effective.

Study Enrollment Process



Panelist Questions

How did randomization impact families, staff, and sites?

1. What did we learn from the agencies?
2. What was helpful in the randomization process?

Data Collection

MIHOPE

Participants:

- 60 minute baseline phone survey
- 60 minute follow-up survey (15 months)
- Video observation of home visit*

Program staff

- Baseline & 12-month survey
- Service delivery, training, and supervision logs
- Video observation of home visit*
- Qualitative interviews*

MIHOPE-Strong Start

Participants:

- 20 minute phone survey

Program staff

- 6-month survey

* Subset of participants and/or program staff

Panelist Questions



What did we learn overall about the data collection process?

What was challenging?

Panelist Questions



What did we learn overall
about client retention?

What was challenging?

Implications and points to ponder for researchers, agencies, local and state, and home visitors

1. Preparing for a study/evaluation
2. Randomization
3. Minimizing Potential Impacts on Retention
4. Improving Data Collection
5. Ongoing training and communication support for data collectors



Questions



Thank you